



“WOODVIEW 102 ACRES

Nestled amidst the idyllic landscapes of Northern NSW, 621 Old Dyraaba Road in CASINO presents a rare opportunity for investors, primary producers, and those yearning for a serene lifestyle. “**WOODVIEW**” offers a breathtaking 102-acre expanse of prime acreage that seamlessly blends functionality with picturesque beauty, making it an unparalleled choice for equestrian enthusiasts, cattle farmers, or those simply seeking a panoramic pastoral retreat.

This magnificent property boasts a flawless balance of well-maintained grazing pastures with the added allure of 360-degree scenic views. Conveniently located mere minutes from the heart of Casino, the commute to nearby Kyogle and Lismore is a breeze, with the additional peace of mind that comes from its flood-free status.

The prospective building site is a true gem, offering an exceptional canvas for your dream rural abode, with the practical benefit of existing power infrastructure. Alternatively, the property's disposition is perfect for embracing solar technology.

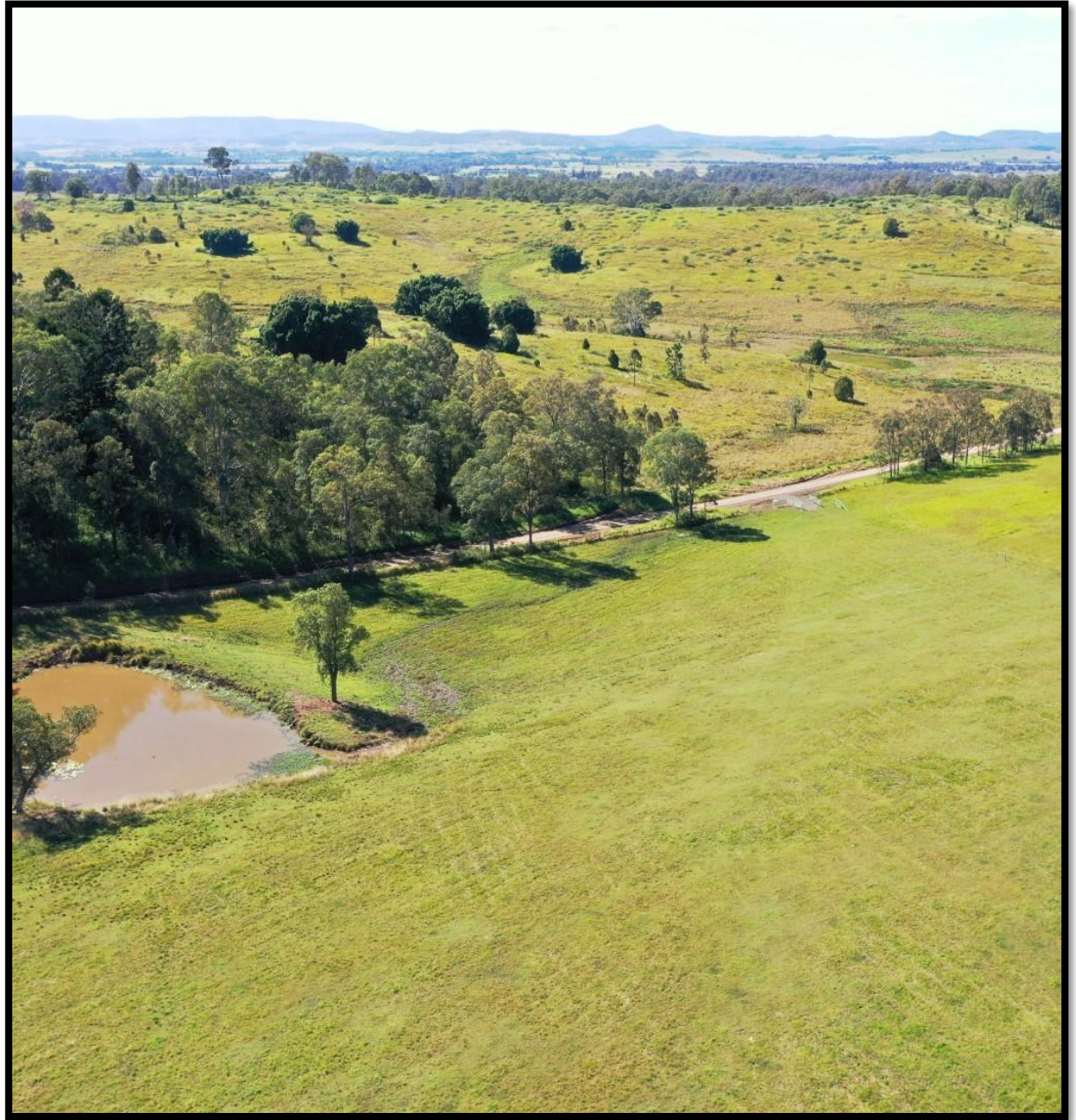
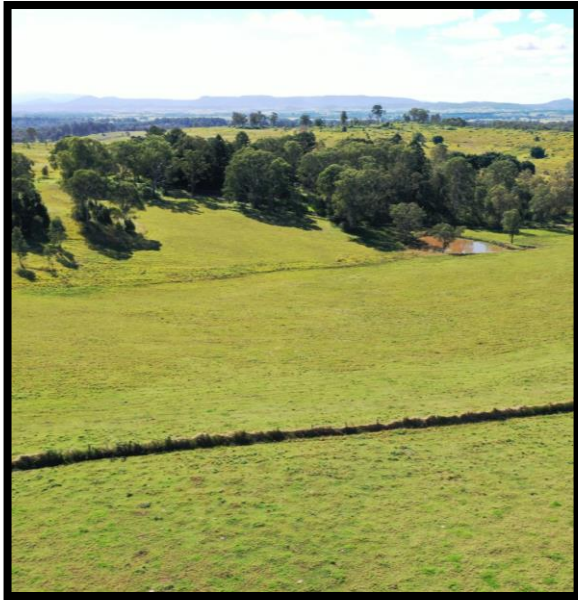
Key features include:

- Three robust dams complemented by a spring gully ripe for the addition of an extensive water reservoir if desired.
- Superior quality to new boundary and internal fencing, dividing the land into three substantial grazing paddocks.
- Capacity for over 30 cows and calves or an ideal setting for both equine and bovine husbandry.
- Proximity to Casino's CBD, educational facilities with school bus service, and reliable mobile network coverage.
- Abundant shade trees, alongside vast expanses of land amenable to slashing.

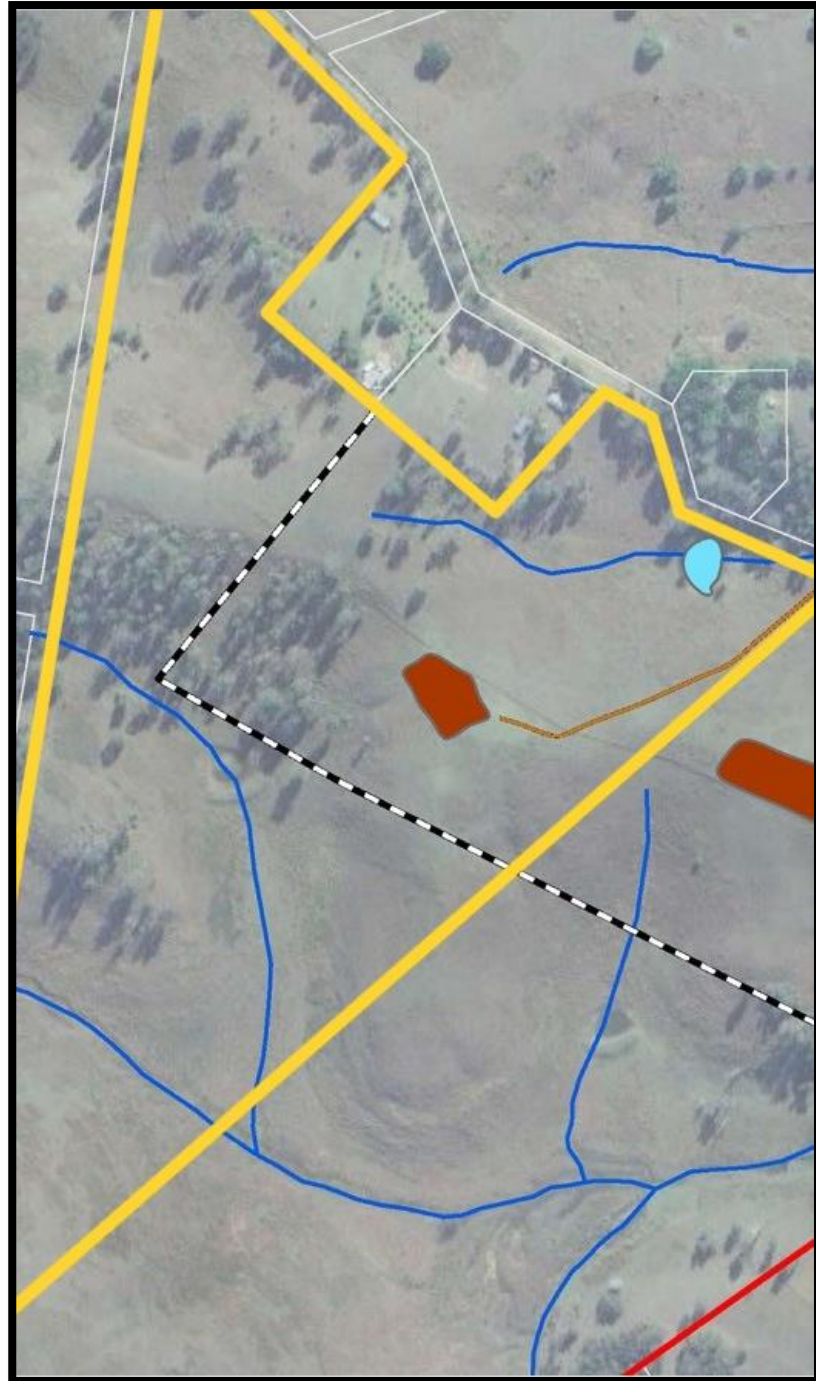
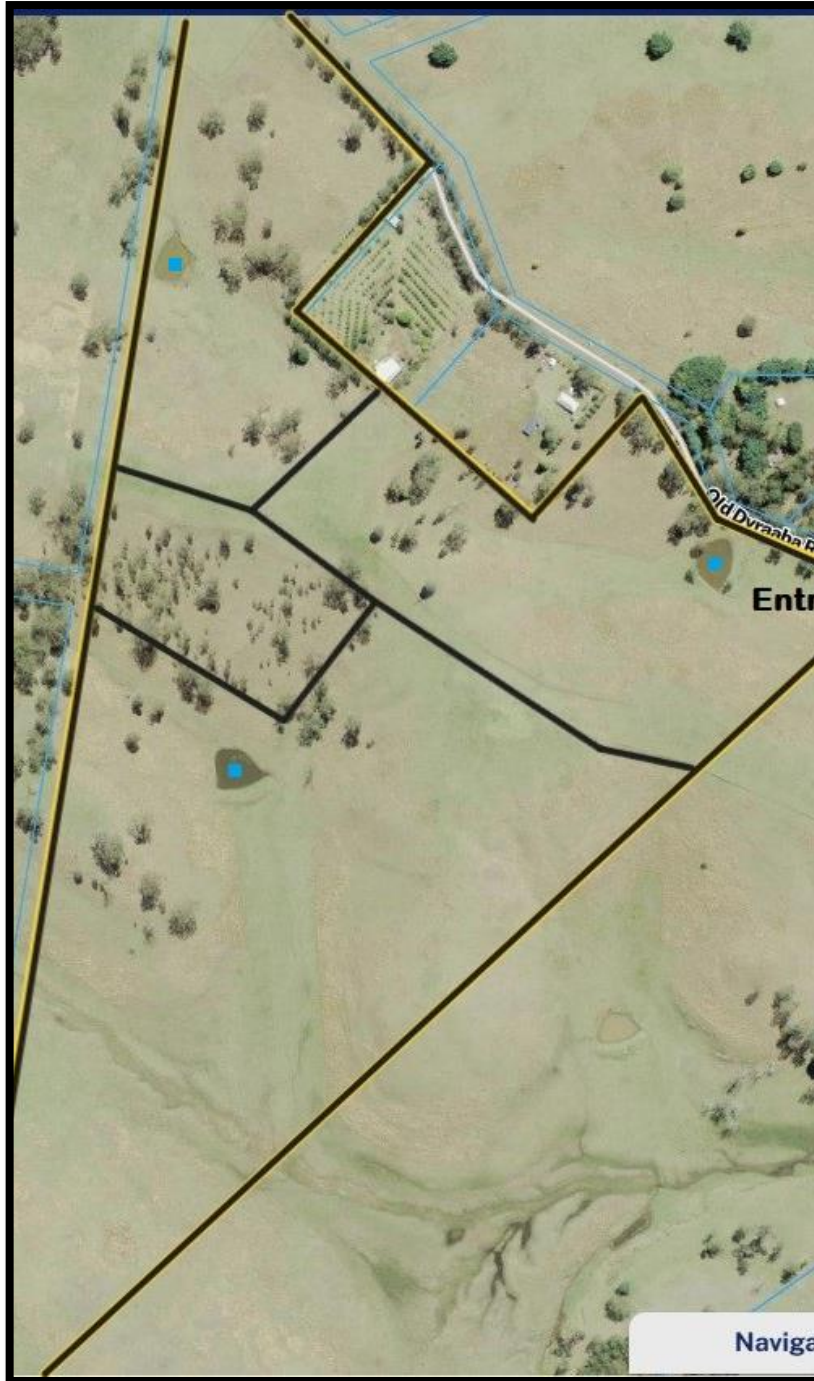
Offered at \$780,000, 621 Old Dyraaba Road is more than just a parcel of land: it's the embodiment of rural grandeur and productivity. To seize this slice of bucolic paradise, please contact Mike at 0413 300 680 or Lance at 0455 589 932 for a viewing or to discuss further particulars.

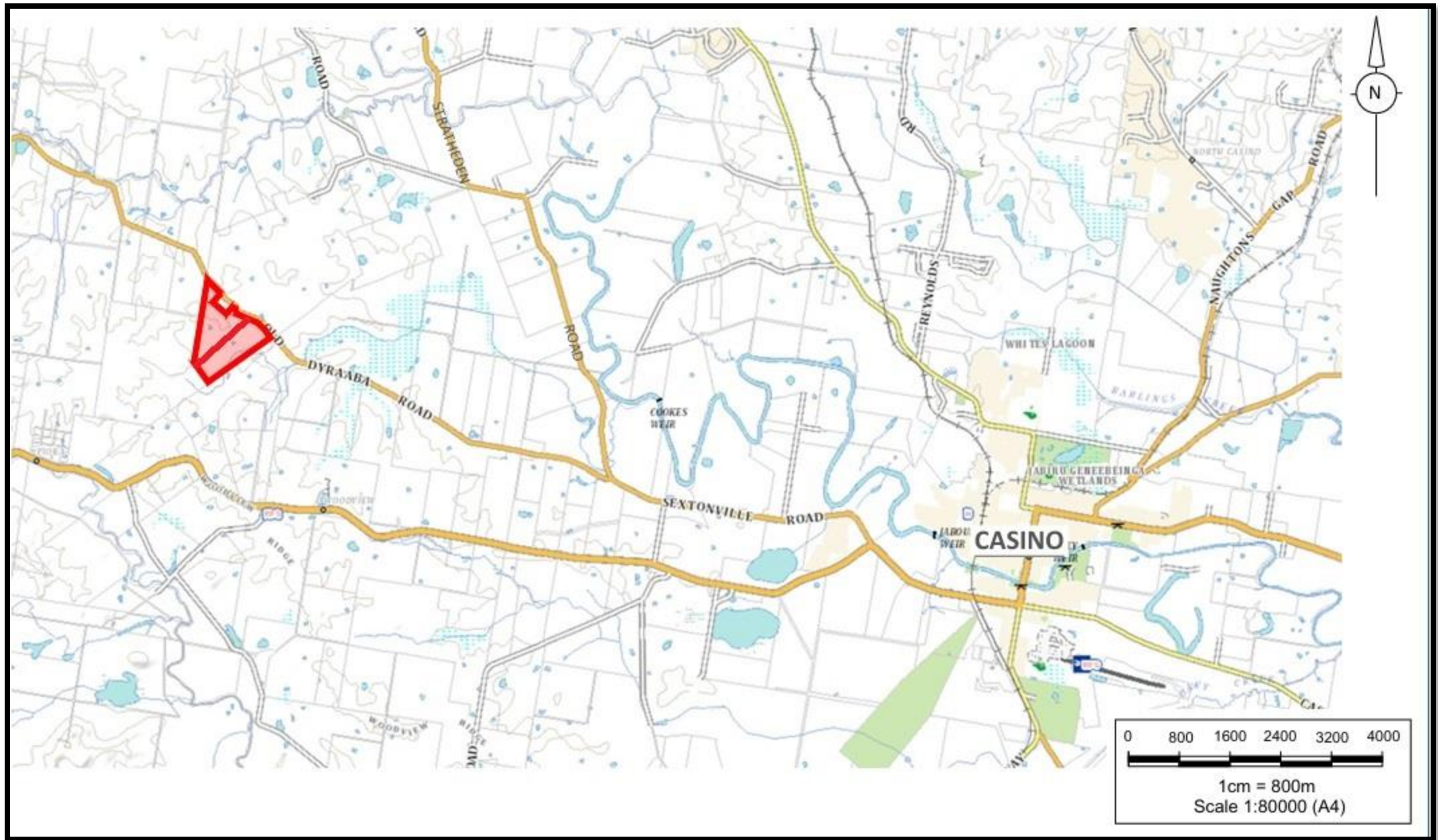












621 OLD DYRAABA ROAD, WOODVIEW VIA CASINO