



“GHINNI GHI” 650 ACRES

Without a doubt this is one of the most productive properties on the North Coast of NSW. The property consists of 650 acres on three titles of principally creek flats and low hill country with Iron Pot Creek running through the property.

Improvements include a 276 m² three-bedroom timber homestead with covered patio, a new 50M x 30M Steel Machinery Shed which houses a set of steel stockyards, machinery, hay and grain, a 151 m² Machinery shed/garage, 375 m² large Machinery shed and 2 sets of fully equipped stockyards on both sides of the creek.

There is close to 250 acres that can be irrigated using the 6" underground mains & approx. 19 hydrants/risers and utilizing the 443 megalitres of irrigation (WALS) that are allocated to the property from Iron Pot Creek which is fed by Toonumbar dam.

The owners run without the irrigation 260 Cows and Calves but with extensive use of the irrigation these numbers could be increased greatly.

This property 99% drought and flood free, the water security on this Ghinni Ghi property is second to none on the North Coast of NSW.

The irrigation equipment i.e. Hardline, pump & motor and diesel tank are included.

If you are serious about owning the best farm in the district, then call Mike Smith for an inspection on 0413300680

Price Guide: \$10K per acre







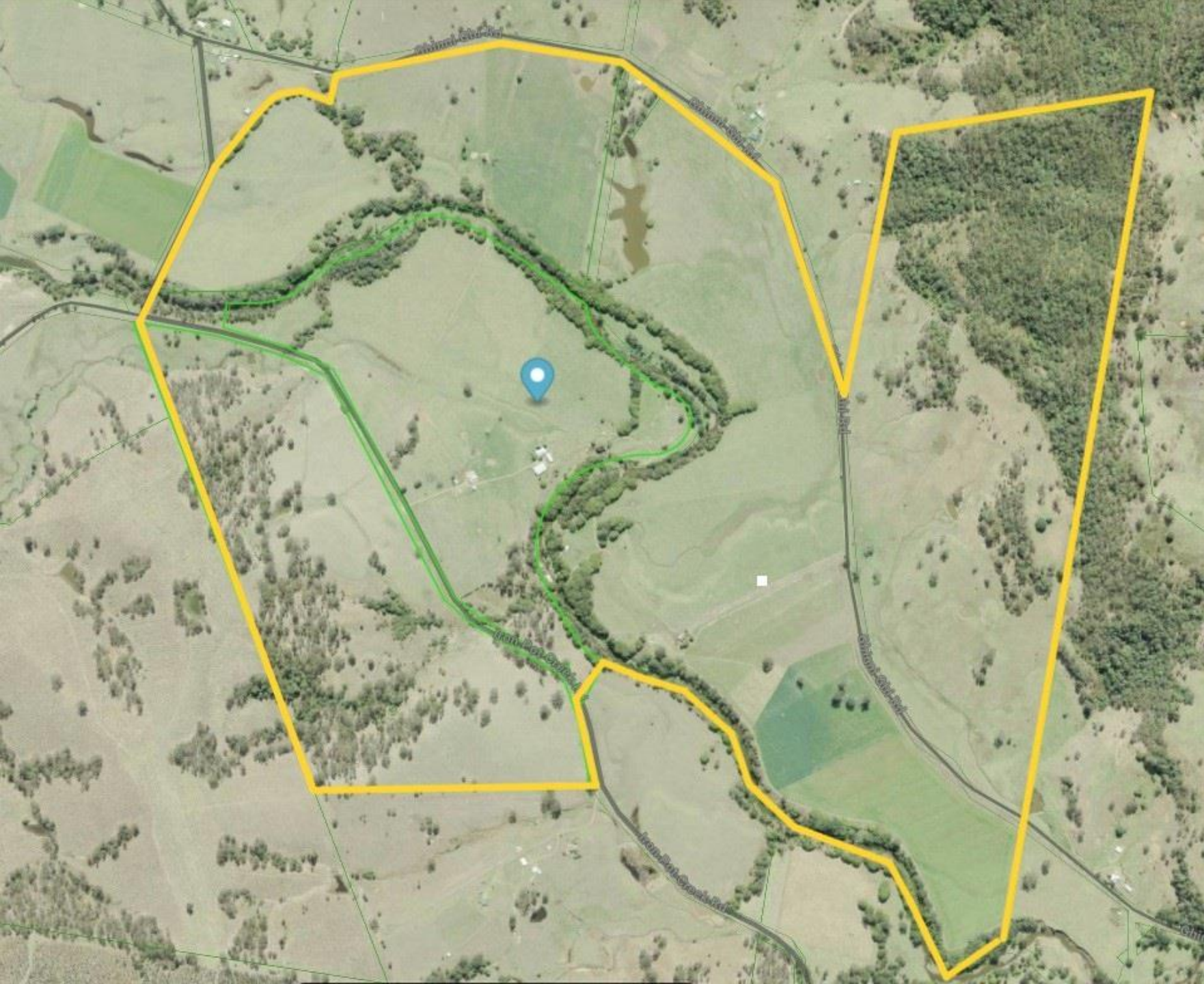










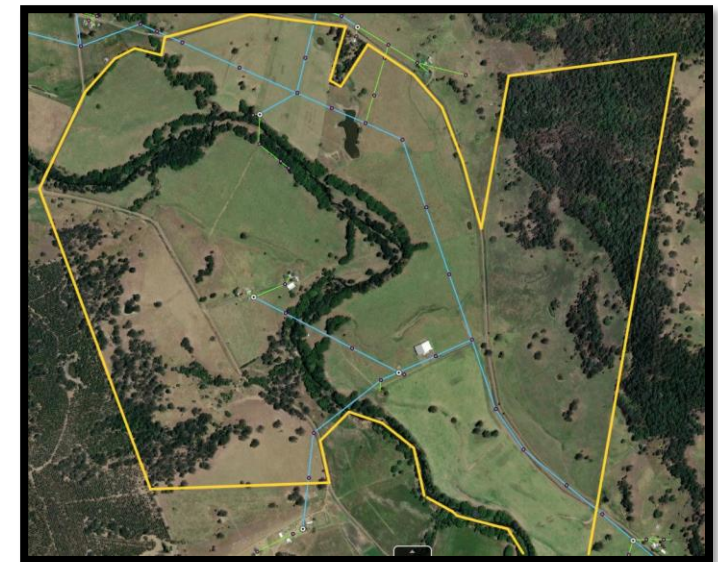


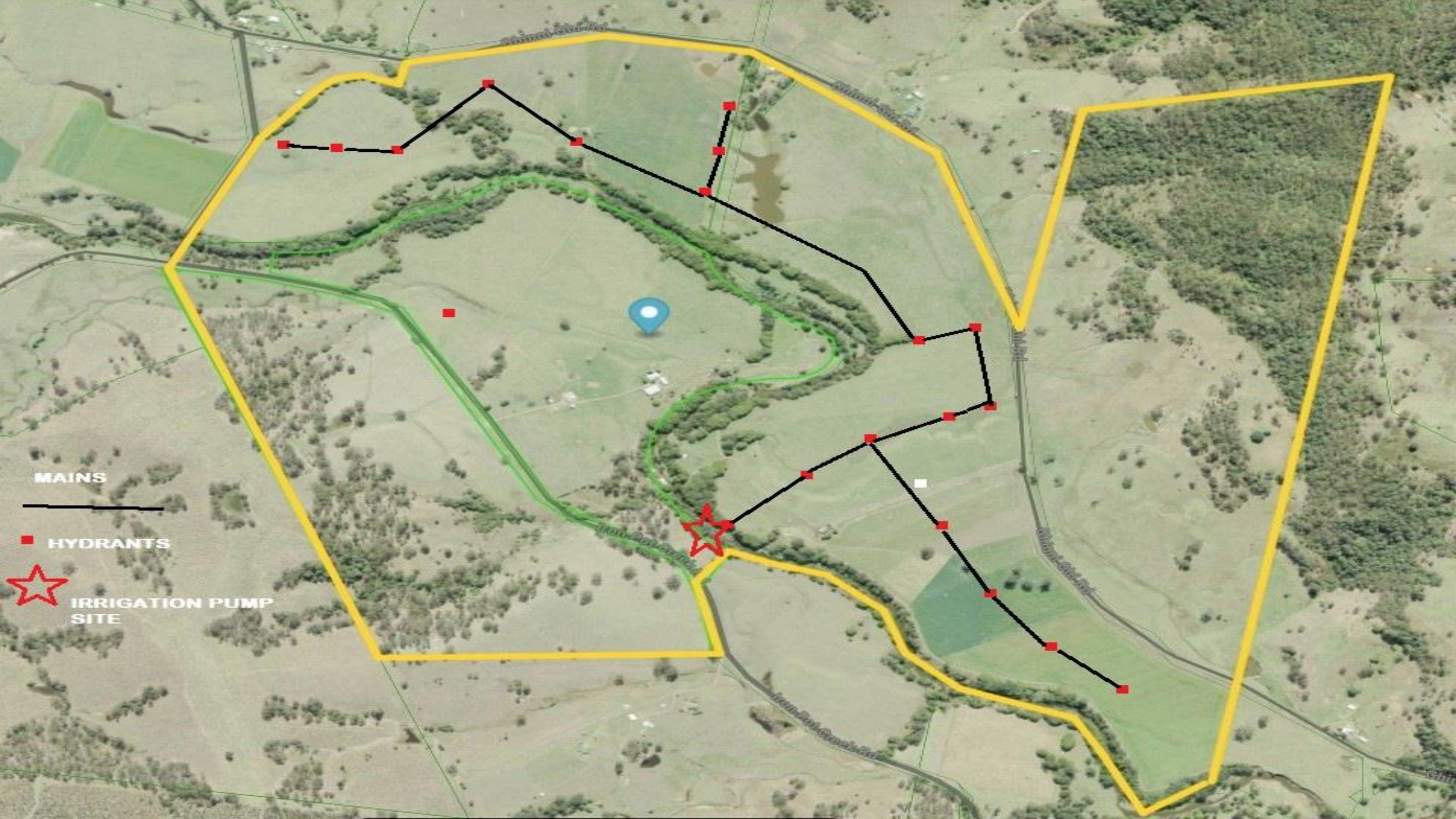
PROPERTY DESCRIPTION
1100 Iron Pot Creek Road,
Ghinni Ghi via KYOGLE NSW

LOT 2 DP1171512 - 141.7 HA
LOT 69 DP755717 - 87.66 HA
LOT 2 DP576913 - 33.769 HA

WATER ACCESS LICENCES

LOT 2 - 240 MEGALITRES
LOT 69 - 59 MEGALITRES
LOT 2 - 144 MEGALITES
LOT 2 BORE LICENCE 3ML





MAINS

■ HYDRANTS

★ IRRIGATION PUMP SITE



TOONUMBAR DAM

GHINNI GHI

25 Minutes from Kyogle

GENEVA

KYOGLA

2.3 Hours to Brisbane
Train Kyogle to Brisbane 2 hours

Casino Yards
20 Minutes

2km