



“DUCK CREEK” 516 ACRES \$1.4M

“McLEANS CAMP” 513 ACRES PRICE \$1,400,000

Duck Creek a rare opportunity to buy a 513 ACRE PROPERTY on 2 titles.

Situated in Old Bonalbo, one of the Northern Rivers most fertile farming corridors this property has improved pastures, permanent water, steel stock yards and currently carries 120 Breeders with room to grow. Plenty of elevated spots to build your dream home with panoramic views looking out over the farm.

This property also features large stands of millable timber with additional quality timber coming though as a future income benefit. Paddocks have been pasture improved with Rhodes Grass, Paspalum, Seteria, Kikuyu and Clovers to name a few. The properties boundary and internal fencing is in great near new condition.

LOCATION: Situated under 2.5 hours to both Brisbane and the Gold Coast Greater Region and just a short drive to the charming village of Bonalbo, Urbenville and Woodenbong.

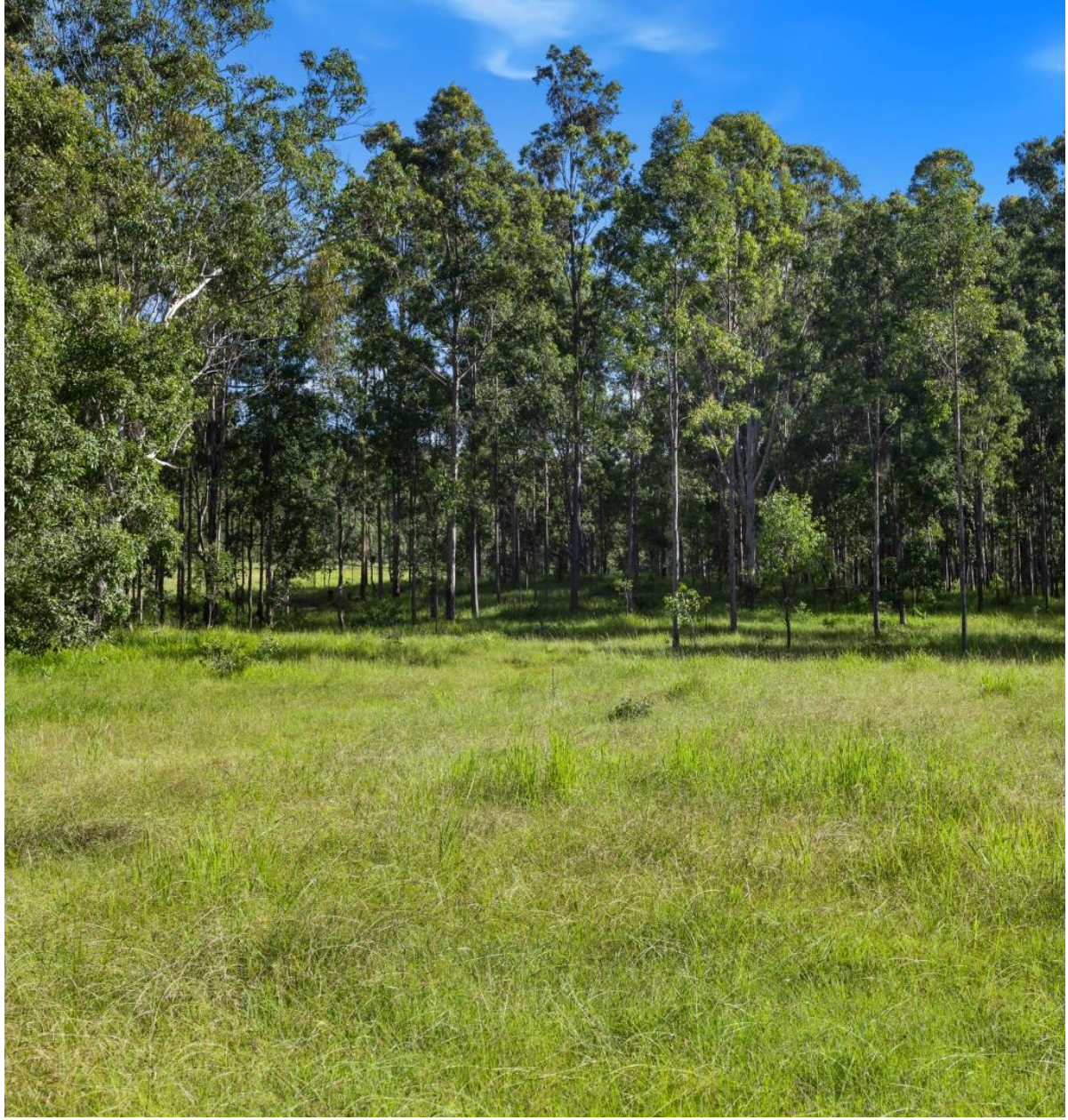
PROPERTY FEATURES: - 2 Titles - 13 Dams - 2 very reliable springs - Steel Cattle Yards - Quality Millable Timber - Multiple spots to build your dream home & Near New Boundary and Internal Fencing.

LIVESTOCK CAPACITY: 120 Breeders

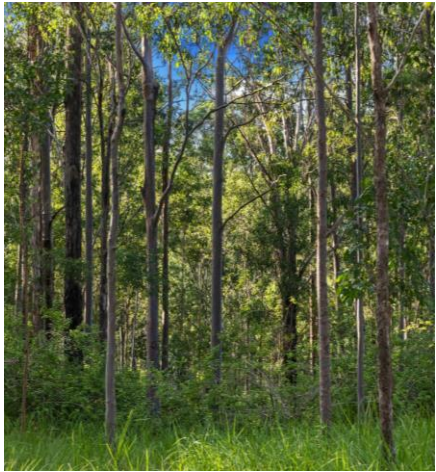
BONALBO AMENITIES: Bonalbo has all the essentials amenities you need to live a comfortable life. Pre School, School, Hospital, Chemist, Post Office, Food Works, Hardware Store, Service Station, Local Swimming Pool, Golf Course, Powicks Cafe and Pizza, Family friendly Dog and Bull Pub and Bowls Club to name a few. *NOTE: Duck Creek is set back off the road and Lot 69 is to Burdened by a right or carriageway Benefiting the adjoining LOT 101

“McLeans Camp” is a unique property with plenty of seclusion and just a bit over two hours drive to Brisbane and all the North Coast coastal towns and beaches.

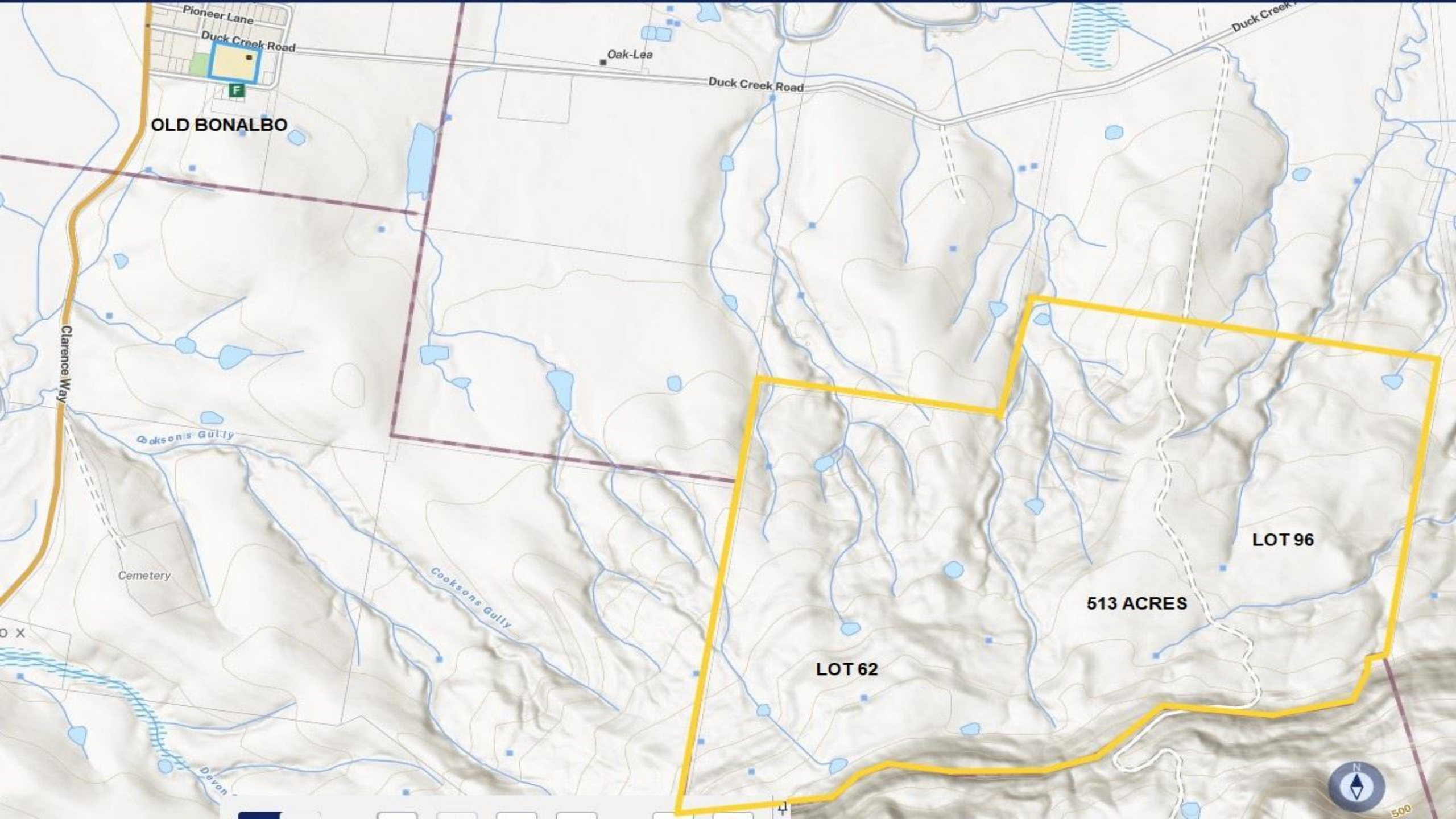
For an inspection, contact Lance Butt 0455 589 932











OLD BONALBO

Oak-Lea

Duck Creek Road

Duck Creek

Clarence Way

Oakson's Gully

Cemetery

Cookson's Gully

Devon

LOT 96

513 ACRES

LOT 62



