

# “WHISPERING GUMS”

OFFERED WALK IN WALK OUT

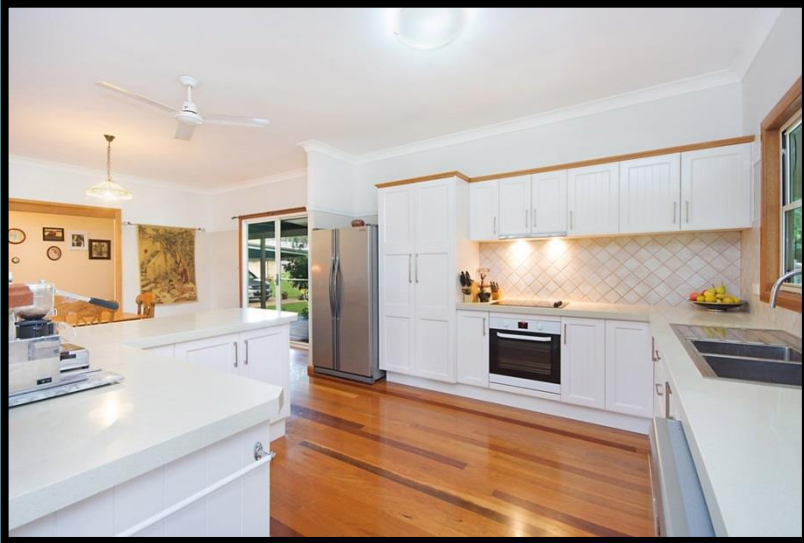


CONTACT MIKE SMITH 0413 300 680 FOR AN INSPECTION

PRICE \$1,170,000 WIWO



# Quality 3 bedroom home







**Magnificent Country only 12 km's from Kyogle**





# PRIME GRAZING LAND SUITABLE FOR STUD CATTLE



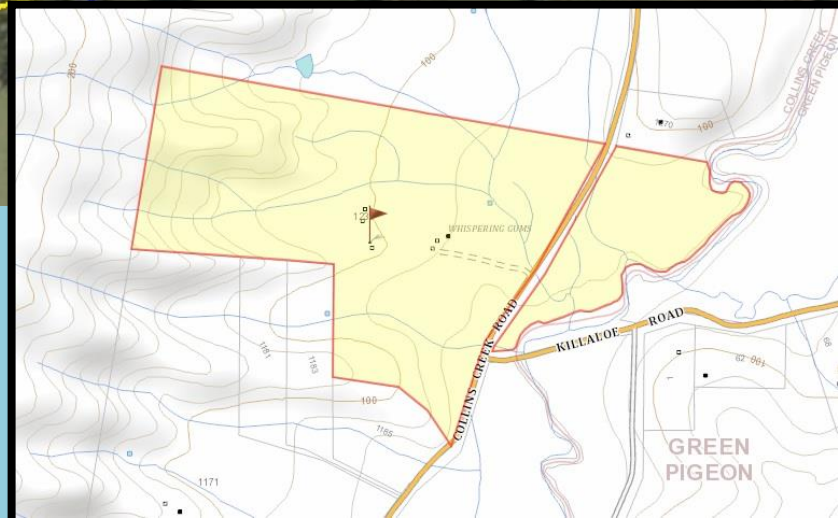








**LOT 11 DP1077299**  
**41.13 HECTARES**  
**2HA IRRIGATION LICENCE**  
**1 BORE LICENCE FOR DOMESTIC & STOCK**



# **“WHISPERING GUMS”**

**A rare opportunity to buy one of the best properties in the district. “*Whispering Gums*” features a beautiful homestead and property that is both productive and picturesque. Located in Collins Creek, a short 12km to Kyogle on sealed roads, you will fall in love with this unique property.**

**The locally constructed Brosnan home is beautifully finished and maintained with ironbark timber floors, cedar french doors that open on to a large verandah which wraps around three sides of the house. The three spacious bedrooms all contain built-in wardrobes and ceiling fans, with an en-suite in the master bedroom and split system reverse cycle air conditioning in the second bedroom. The kitchen features a fabulous kitchen with new cooking appliances and dishwasher to host unforgettable dinner parties on the adjoining large living/dining area. A second large split air conditioning system services the kitchen, dining, lounge, study and living rooms for the warmer months. There is a wood heater in the living room that warms the whole house in winter and makes for cosy nights by the fire. A 1.5Kva solar panel system contributes to the sustainability of the home in terms of energy use. A 25,000 litre rain water tank and 40 inches of annual rainfall ensures you will have ample water for domestic use.**

**Other features includes a separate study and laundry that contains a shower that is farm functional and includes outside access to the toilet. A large carport that comfortably houses 2 4WD vehicles is located at the rear of the house, ensuring that you are covered when arriving or departing from the premises. A separate granny flat that could easily have a bathroom/toilet added for guest accommodation or Air B & B rental.**

# **“WHISPERING GUMS”**

The house is surrounded by 2.5 acres of magnificent garden that enjoys abundant bird life all year round. Relaxing on the front verandah, you view the majestic Border Ranges National Park and looking to the west is the ridgeline known as ‘The Helmet’ that offers protection from westerly winds and the afternoon sun in summer.

This 102 acre fertile property has approx. 800m frontage to Fawcett’s Creek with a 3 mega litre irrigation licence to allow for pasture cropping. The carrying capacity is estimated between 40-60 breeders, subject to seasonal conditions. There are 11 paddocks, excluding the irrigation and hay baling paddocks. This allows for great rotational grazing and production of winter rye and hay for baling, and storage in the large hay shed. In addition to the irrigation water licence from the creek, there is also a bore located near the house which provides outdoor watering for stock troughs, gardening and toilets. A spring fed dam also contributes to supply of fresh water to cattle troughs. There are a good set of timber yards, with a long race and metal crush that adjoin the dairy, with off road, all weather loading access.

There are a number of sheds on the property to make it a well-established commercial cattle farm, they include:

- Small colour bond 6 x6m, 2 bay machinery shed near the house for small plant and equipment.
- Second steel/metal 10m x6m, 3 bay machinery shed (with concrete floor) houses the tractor and implements.
- Hay shed 10m x 8m and high roof with a total storage capacity of approx. 90 round bales.
- Old piggery and dairy storage areas.

**This property shouldn’t be missed as you won’t be disappointed.**



Whispering Gums Includings List		
Machinery		
	Qty	Description
	1	Daedong Tractor and Bucket 4WD 75 HP
	1	6ft Slasher (Tractor PTO)
	1	Post Driver (Tractor PTO)
	1	Post Hole Auger (Tractor PTO)
	1	Fertiliser Spreader (Tractor PTO)
	1	Hay Forks (Tractor 3 Point Linkage)
	1	Hay Spear (Tractor Front Loader)
	1	Seeding Rippers (Tractor 3 Point Linkage)
	1	3 Prong Ripper Plough (Tractor 3 Point Linkage)
	1	50 litre Electric Sprayer
	1	15 litre Backpack Sprayer
	1	Yanmar 10 HP Irrigation Pump, Mains and Sprayline (10 K-Line Sprinkler Heads)
	1	Stihl Chainsaw
	1	Honda Brush Cutter
	1	Husqvarna Hedge Trimmer
	1	Ride on mower Cox Lawn Boss 42" twin blade cutting platform
	1	Diesel Tank
	1	Small Sprayboom
	Unknown	Electric Fence Stakes
	1	Electric Fence meter
	6	Hay Feeders
	1	4 Tonne Square Grain Silo
	2	Grain Feeders
	1	Lister Diesel Engine
	3	Hay Rings
	1	Electric Welder
	1	Various Fencing Tools
	1	Fencing wire Spinner
	1	Star Picket Hand Driver
	1	C-Post Hand Driver
	Unknown	Various Cattle Handling Equipment eg Ear Tag Pliers
Livestock		
	40	Cows and Heifers Joined
	5	Replacement Heifers
	18	Calves
	1	Angus Bull
Feed		
	32	Round Silage Bales