

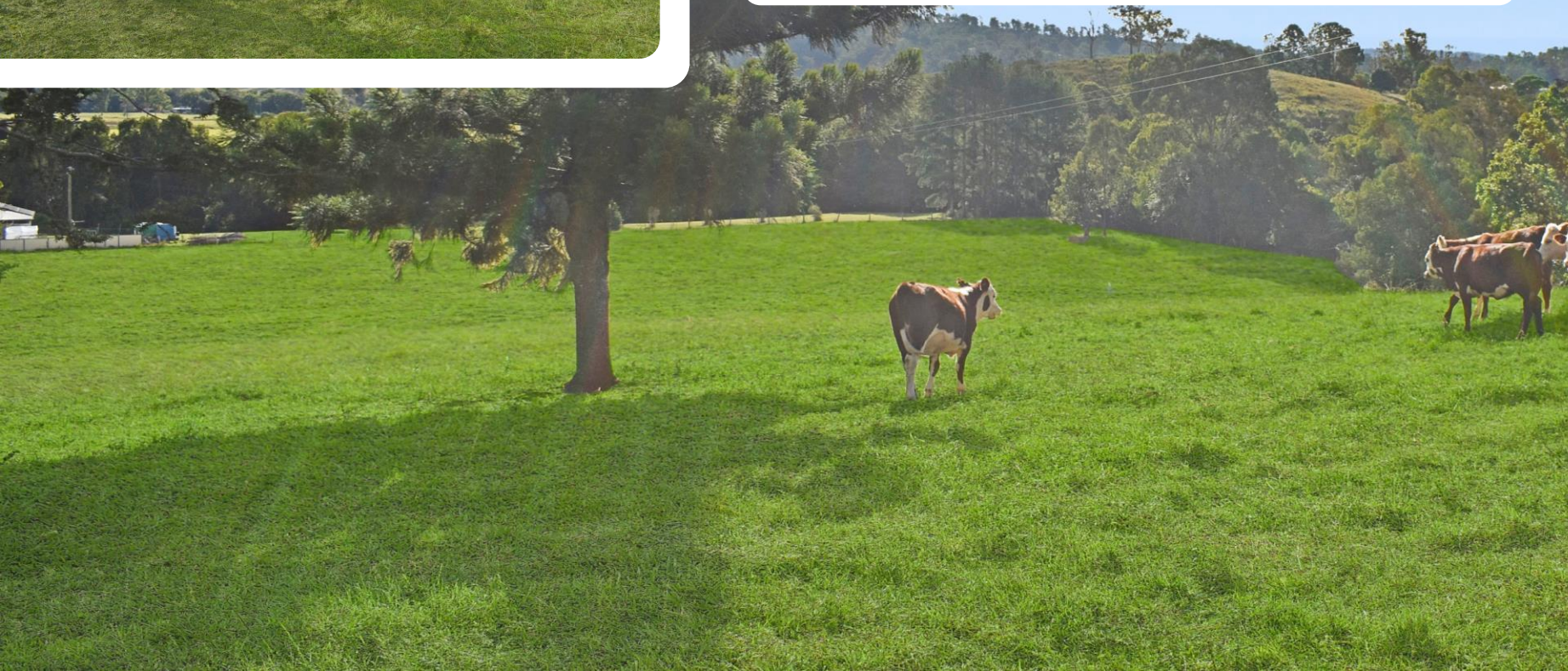
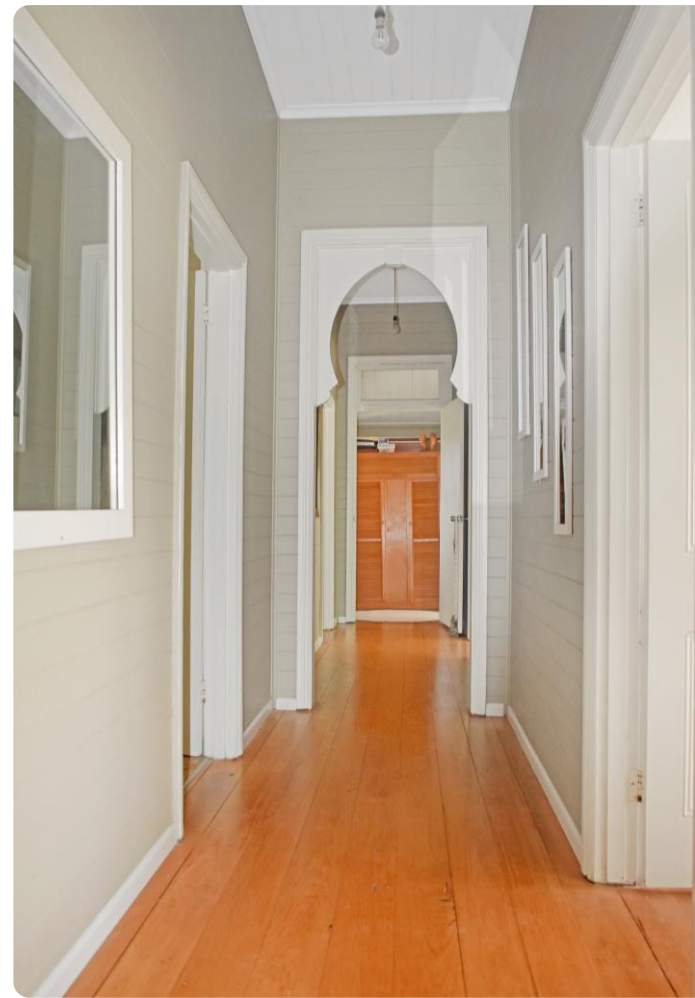
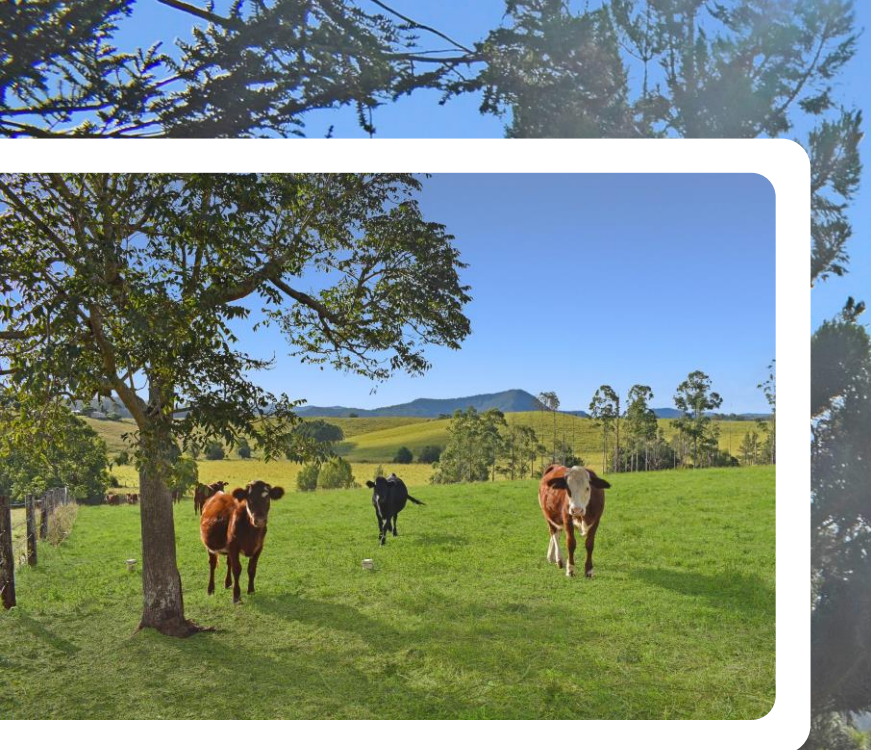


“Gumtree Lodge”
15 Acres

Price \$960,000













"Gumtree Lodge" is situated only 10 minutes North of Kyogle and has commanding views all over the Richmond Valley.

The lovely timber homestead sits high on top of a reasonably flat ridge overlooking the 15 acres of manicured pastures. You enter the property from the main road and drive up an all-weather fenced driveway to the house.

The homestead features beautiful timber floors and hallways, a modern kitchen, 4 spacious bedrooms, high ceilings, bathroom with a spa, a very comfortable rumpus/family room, a large outdoor entertaining covered area and double carport. Views are plentiful from the entertaining area and the wide verandah's which feature on two sides of the house and from there "The Helmet" mountain makes a beautiful backdrop to this property.

Other improvements include several storage and garden sheds, a large machinery and storage shed with a skillion to house a large RV or caravan.

"Gumtree Lodge" is a unique property and would suit a retiree or working family, the school bus comes past the front gate and the nearest primary school is only 1km away. The land suits any type of livestock and is well fenced.

For an inspection, please contact Simon Tough on 0402706565 or Mike Smith on 0413 300 680